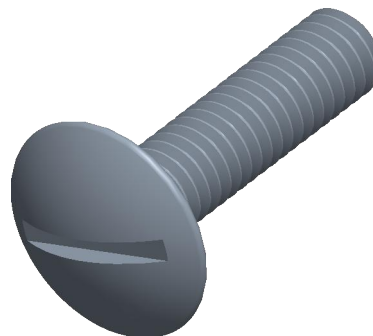


Notes:

1. **Specification:** NFE 27-128
2. **Thread Diameter + Pitch:** M4X0.7
3. **Length:** 16mm
4. **Thread Amount:** Full Thread
5. **Material:** Stainless Steel
6. **Finish:** Plain
7. **Head Diameter:** 10mm
8. **Head Height:** 2.2mm
9. **Drive:** Slotted
10. **Type Screw/Bolt:** Truss Head Machine Bolt/Screw
11. **Thread Direction:** Right Hand
12. **Measurement System:** Metric



virtual3dcatalog.com		THIRD ANGLE PROJECTION	
This file and the related information are provided for reference only and may change without notice. Manufacturer does not guarantee the accuracy, completeness, or suitability of this file or the information provided. You are responsible for how you use this file and its information.		This document is the property of Manufacturer. The information in it may not be copied, shared, or given to any third party without written permission from Manufacturer.	
<b>TITLE</b> <b>Truss Head Screws</b>		<b>DESCRIPTION</b> M4 Slotted Truss Head Stainless Steel A2 NFE 27-128	
Sheet Size	PART NUMBER	Rev.	ISSUED
<b>A</b>	V3D-SLHSL4X16SS	05	2026-04-13
SCALE: 5.629		Unless otherwise specified Dimensions are in MILLIMETERS	