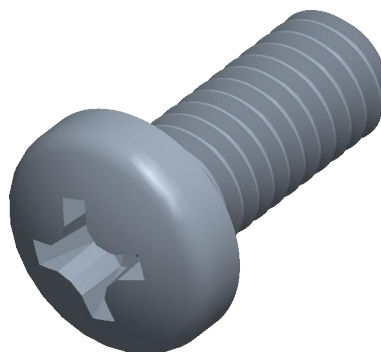


Notes:

1. **Specification:** JIS B1111
2. **Thread Diameter + Pitch:** M5X0.9
3. **Length:** 12mm
4. **Thread Amount:** Full Thread
5. **Material:** Class 4.8 Steel
6. **Finish:** Zinc Plated
7. **Head Diameter:** 9mm
8. **Head Height:** 3.3mm
9. **Drive:** H2 / Phillips #2
10. **Type Screw/Bolt:** JIS Small Pan Head Bolt/Screw
11. **Thread Direction:** Right Hand
12. **Measurement System:** Metric



virtual3dcatalog.com		THIRD ANGLE PROJECTION	
This file and the related information are provided for reference only and may change without notice. Manufacturer does not guarantee the accuracy, completeness, or suitability of this file or the information provided. You are responsible for how you use this file and its information.		This document is the property of Manufacturer. The information in it may not be copied, shared, or given to any third party without written permission from Manufacturer.	
TITLE Small Pan Head Screws		DESCRIPTION M5X0.9 Ex Coarse Pan Head Steel Class 4.8 Zinc Retired JIS B-1111 Screw	
Sheet Size	PART NUMBER	Rev.	ISSUED
A	V3D-MSPSH5X0.9X12CLZ	05	2026-04-13
SCALE: 6.533		Unless otherwise specified Dimensions are in MILLIMETERS	