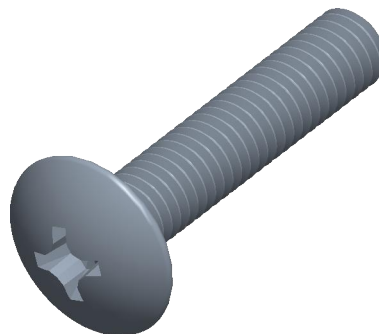


Notes:

1. **Specification:** JIS B1111
2. **Thread Diameter + Pitch:** M6X1.0
3. **Length:** 30mm
4. **Thread Amount:** Full Thread
5. **Material:** Stainless Steel
6. **Finish:** Plain
7. **Head Diameter:** 14mm
8. **Head Height:** 3.7mm
9. **Drive:** H3 / Phillips #3
10. **Type Screw/Bolt:** Truss Head Machine Bolt/Screw
11. **Thread Direction:** Right Hand
12. **Measurement System:** Metric



virtual3dcatalog.com		THIRD ANGLE PROJECTION	
This file and the related information are provided for reference only and may change without notice. Manufacturer does not guarantee the accuracy, completeness, or suitability of this file or the information provided. You are responsible for how you use this file and its information.		This document is the property of Manufacturer. The information in it may not be copied, shared, or given to any third party without written permission from Manufacturer.	
<b>TITLE</b> Truss Head Screws		<b>DESCRIPTION</b> M6 Phillips Truss Head Stainless Steel A2 JIS B-1111	
Sheet Size	PART NUMBER	Rev.	ISSUED
<b>A</b>	V3D-SLH6X30SS	05	2026-04-13
SCALE: 3.328		Unless otherwise specified Dimensions are in MILLIMETERS	