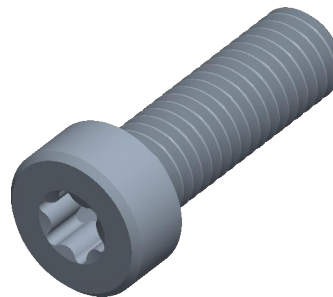


Notes:

1. **Specification:** DIN 7984
2. **Thread Diameter + Pitch:** M8X1.25
3. **Length:** 25mm
4. **Thread Amount:** Full Thread
5. **Threaded Length:** 25mm
6. **Unthreaded Length:** 0mm
7. **Material:** Class 8.8 Steel
8. **Finish:** Zinc Plated
9. **Head Diameter:** 13mm
10. **Head Height:** 5.8mm
11. **Drive:** T40 Torx Socket
12. **Type Screw/Bolt:** Socket Low Head
13. **Thread Direction:** Right Hand
14. **Measurement System:** Metric



|  |                     |   |            |
|--|---------------------|---|------------|
| virtual3dcatalog.com   |                     | THIRD ANGLE PROJECTION  |            |
|  |                     |   |            |
| This file and the related information are provided for reference only and may change without notice. Manufacturer does not guarantee the accuracy, completeness, or suitability of this file or the information provided. You are responsible for how you use this file and its information. |                     | This document is the property of Manufacturer. The information in it may not be copied, shared, or given to any third party without written permission from Manufacturer. |            |
| <b>TITLE</b><br>Low Socket Head Screws   |                     | <b>DESCRIPTION</b><br>M8 Low Torx Socket<br>Steel Class 8.8 Zinc<br>DIN 7984 TX-40  |            |
| Sheet Size   | PART NUMBER         | Rev.  | ISSUED     |
| <b>A</b>   | V3D-BSH8X25TXLOWCLZ | 05  | 2026-04-13 |
| SCALE: 3.334   |                     | Unless otherwise specified Dimensions are in MILLIMETERS  |            |